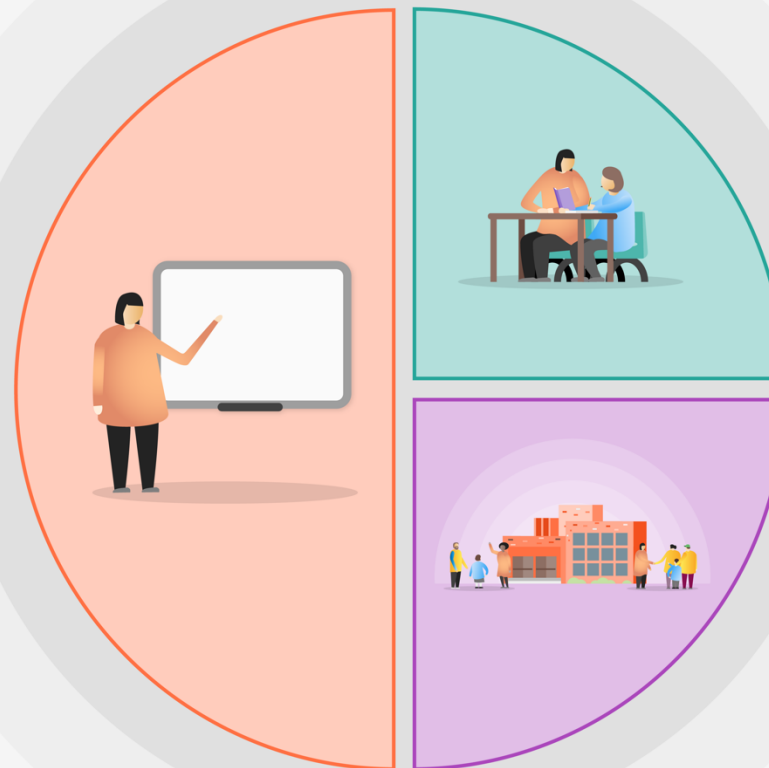


## 1 Teaching

- Develop and engage with the core meaning of 'Aspire & Achieve'.
- Further development and embedding of metacognition and self-regulated learning across the Academy.
- Use of the 21stC Trivium model.
- Quality First Teaching supported by CPD.
- Focusing on vocabulary development in lessons as a means to improve students' academic and social opportunities. (Trivium)
- Ensuring that all students achieve their full potential.
- Development of positive character traits.
- Explicit teaching and modelling of PLTS skills.
- Further develop a reading culture; through Accelerated Reader, P6, Library groups, staff modelling.
- Live marking and live feedback in lessons to improve understanding and help progression.



## 2 Targeted academic support

- Maths/English intervention
- Peer to peer coaching
- Peer reading partners
- Spelling Intervention
- Yr 11 Subject intervention
- Accelerated Reading/ Library groups reading
- 360 Pupil Profile
- Learning Mentors
- TA support
- Monitoring through RSG meetings
- Bespoke interventions where required
- Attendance Interventions

## 3 Wider strategies

- Homework Club / Breakfast Club
- Develop and engage with the core meaning of 'Aspire & Achieve'
- Embedding the key attributes of PiXL Edge.
- Learning Mentors
- Educational and cultural trips
- Extra-curricular clubs
- Attendance strategies
- Sustainability groups
- Numeracy and Literacy Coordinators
- Music lessons
- Making sure pupils are equipped for lessons and self-regulated learning